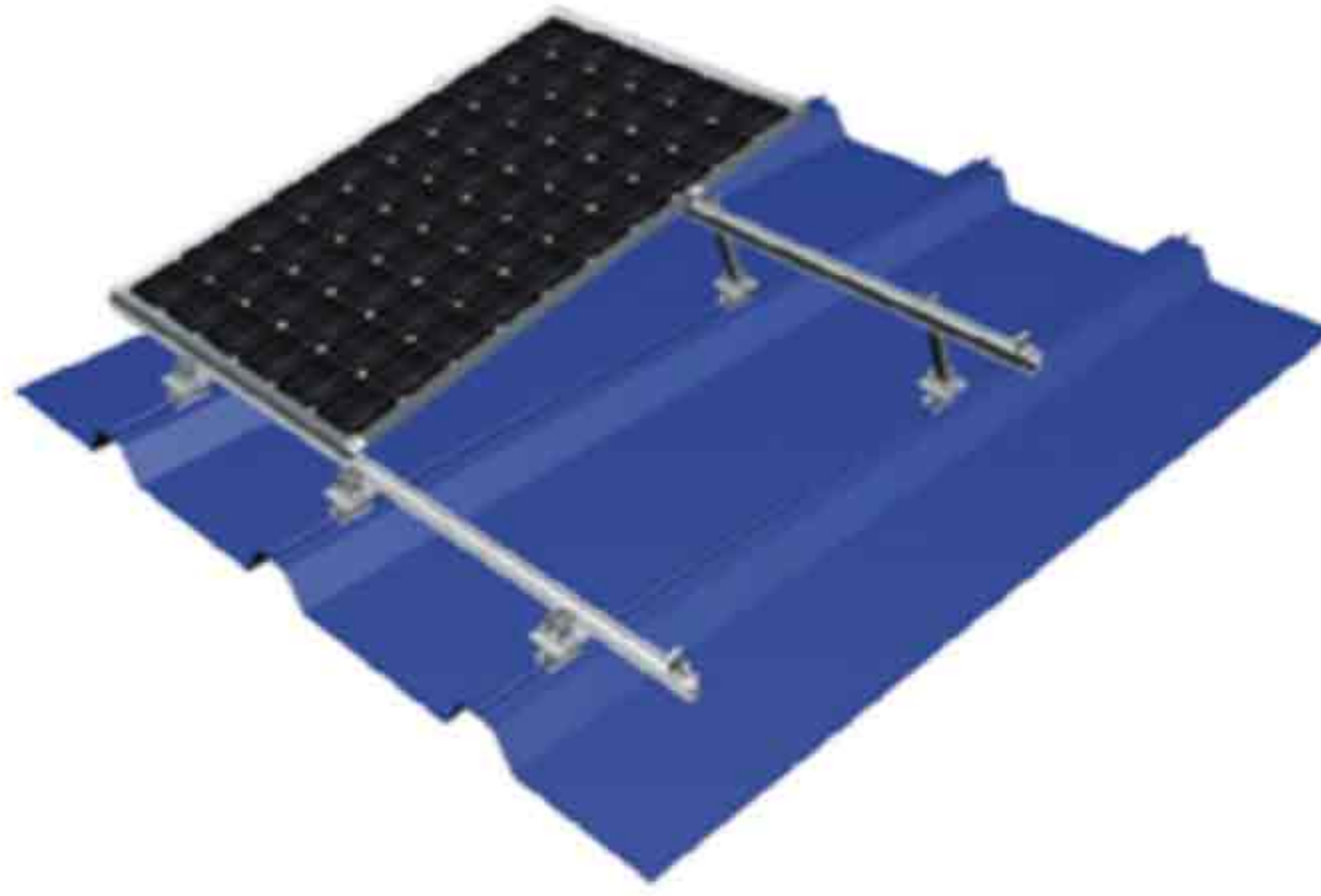
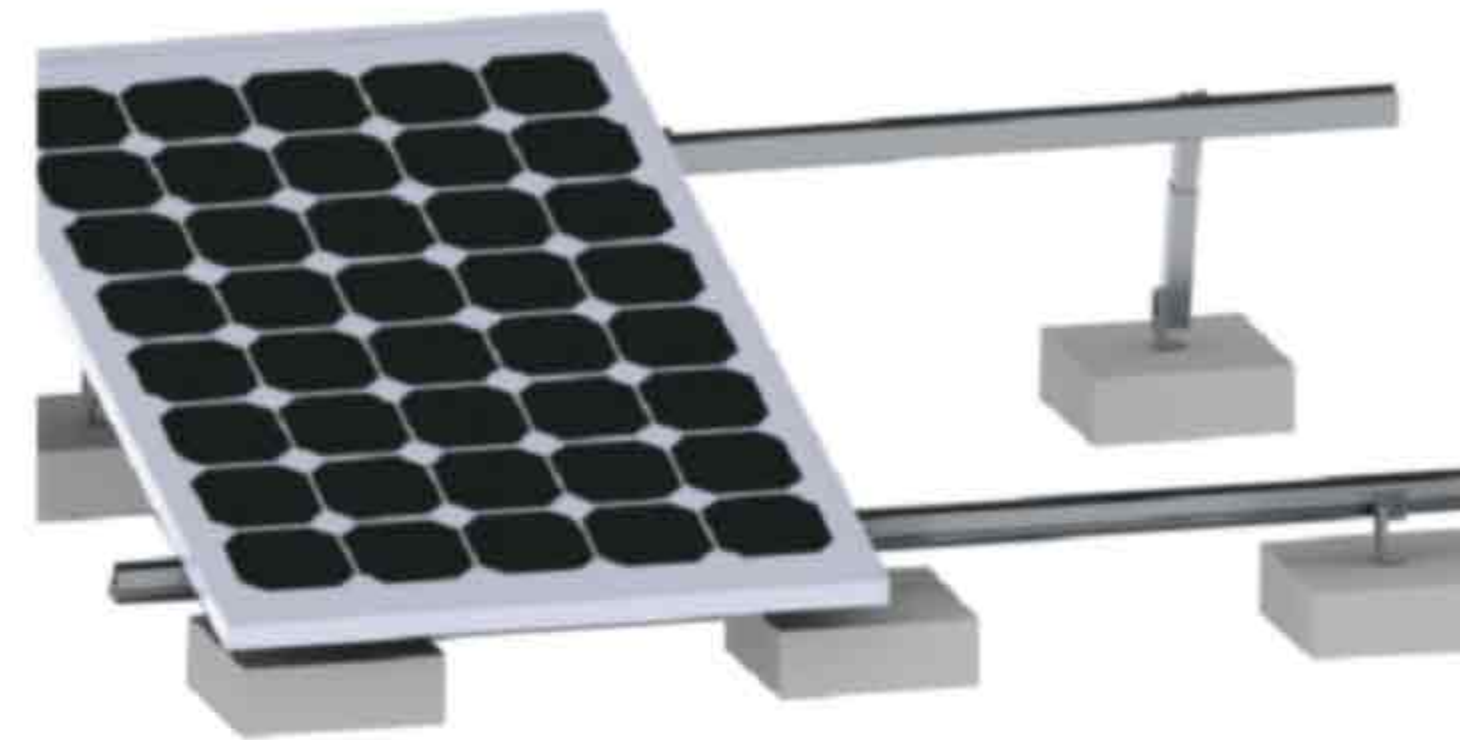


JS-R-01 ROOF ADJUSTABLE TILT PV MOUNTING SYSTEM

JS-R-01 is applied in the most corrugated tin roof and flat roof in commercial and industrial solar projects, allowing solar panels to be installed in the angle ranges from 10 to 15 degrees, 15 to 30 degrees and 30-60 degrees.



Used For Metal Roof

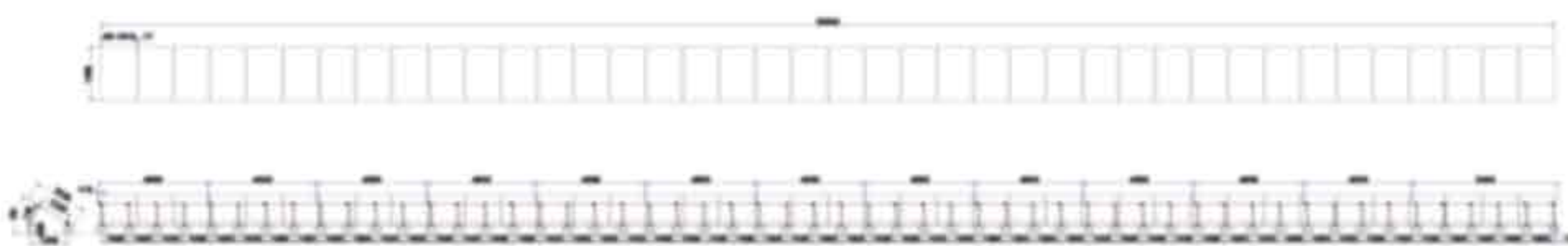


Used For Concrete Roof

Components

JS-IC	JS-EC	JS-CR1-SP	JS-CR1	JS-AD-RL	JS-AD-FL	JS-110B	JS-AG6
Inter Clamp Kit	End Clamp Kit	Splice for Rail	Rail	Adjustable Rear Leg	Adjustable Front Leg	Base Bottom Kit	Tube

Sample of Design Drawing

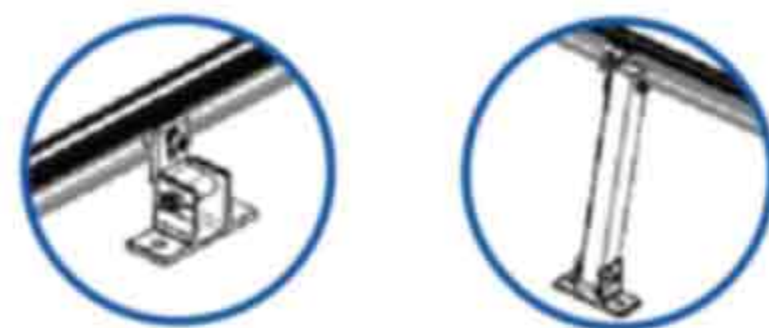


Optional adjustable angle rear leg:

10-15 degrees

15-30 degrees

30-60 degrees



Project Case



TECHNICAL PARAMETERS

System Name	Roof Adjustable Tilt PV Mounting System
Install Site	Metal Roof or Concrete Flat Roof
The Available Installation Tilt Angle	10-15°, 15-30° and 30-60°
Building Height	up to 20m
Max Wind Speed	60M/S
Max Snow Load	1.6KN/m ²
Applicable Solar Module	Framed or Frameless
Panel Layout	Landscape or Portrait
Material	AL6005-T5 High Class Anodized Aluminium
Fastener	High Strength Stainless Steel 304
Design Standard	AS/NZS 1170, ASCE 7-10, JIS2017
Warranty	Ten Years Warranty
Duration	More than 25 years